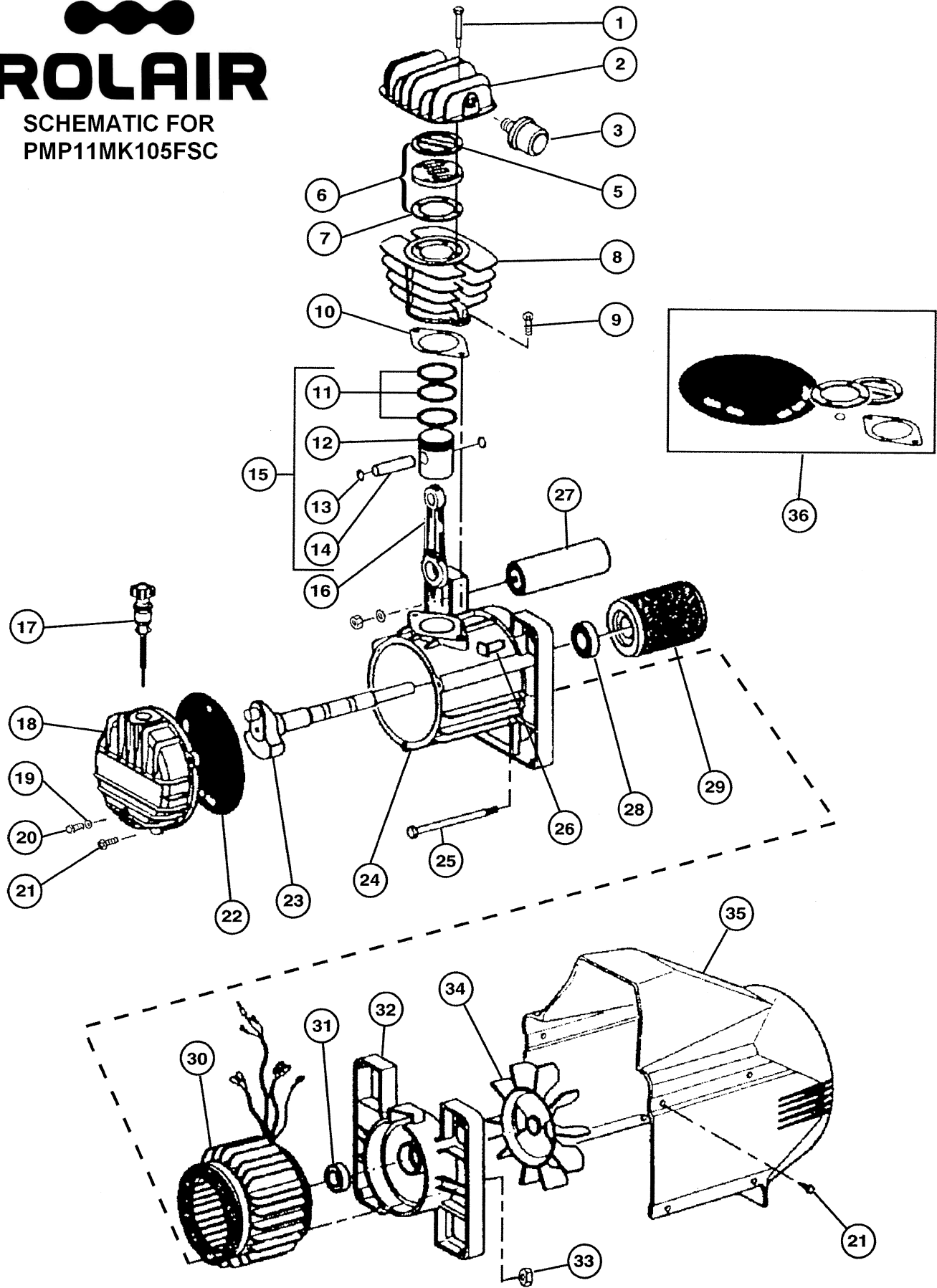


# ROLAIR

SCHEMATIC FOR  
PMP11MK105FSC





**ROLAIR SYSTEMS**

606 S. Lake Street, P.O. Box 346  
 Hustisford Wisconsin 53034-0346  
 Phone: 920-349-3281  
 Sales Fax: 920.349.3691  
 Service Fax: 920.349.8861  
[www.rolair.com](http://www.rolair.com)

**PARTS LIST FOR PMP11MK105FSC**

Schematic #	Description	Part #	Qty.
1	Bolt	014002021F	4
2	Head	116001001F	1
3	Intake Filter	317007000F	1
4	Gasket	116022009F	1
5	Valve Plate Assembly	116022100F	1
7	Gasket	116022010F	1
8	Cylinder	116032060F	1
9	Bolt	014011064F	2
10	Gasket	116022029F	1
11	Ring Set	216022002F	1
12	Piston	116022004F	1
13	Snap Ring	015001000F	2
14	Piston Pin	116022040F	1
15	Piston Assembly	416022004F	1
16	Connecting Rod	116091021F	1
17	Dipstick	012035000F	1
18	Crankcase Cover	116022006F	1
19	O-Ring	010072000F	1
20	Drain Plug	014013024F	1
21	Screw	014006121F	5
22	Diaphragm	116001025F	1
23	Crankshaft	116032006F	1
24	Motor Housing	116022051F	1
25	Bolt	116011038F	2
26	Manual Reset Button	008017000F	1
27	Capacitor	009200026F	1
28	Bearing	033078000F	1
29	Rotor	116022026F	1
30	Stator	416053641F	1
31	Bearing	033005000F	1
32	End Bell	116011002F	1
33	Nut	014003002F	2
34	Fan	116001003F	1
35	Shroud	116032022F	1
36	Gasket Set	216GH0002F	1